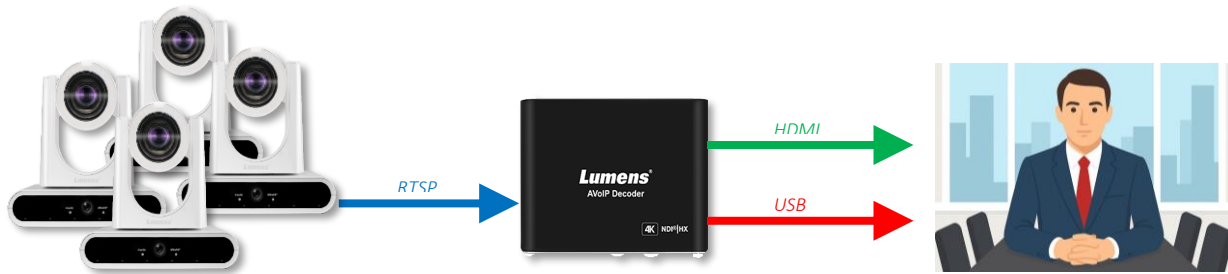


VC-TR60A VoiceConnect Setting Guide

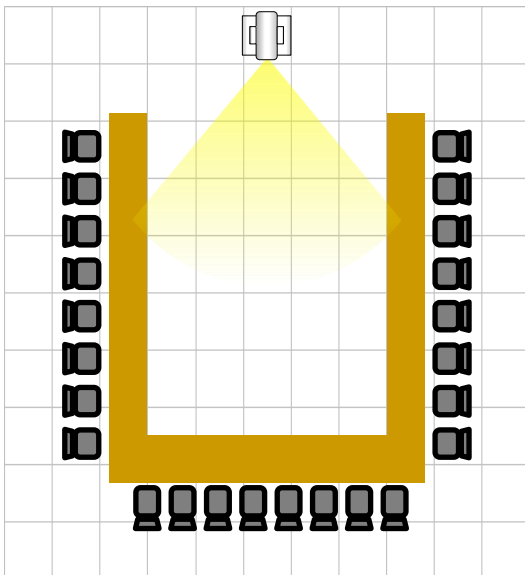
1. Introduction

The VoiceConnect feature enables OIP-N60D to receive audio volume data from multiple VC-TR60A cameras. It determines the speaker closest to each camera and automatically switches to the respective video feed. This extends the voice tracking range beyond the typical 8-meter limit, making it ideal for large meeting rooms or classrooms.



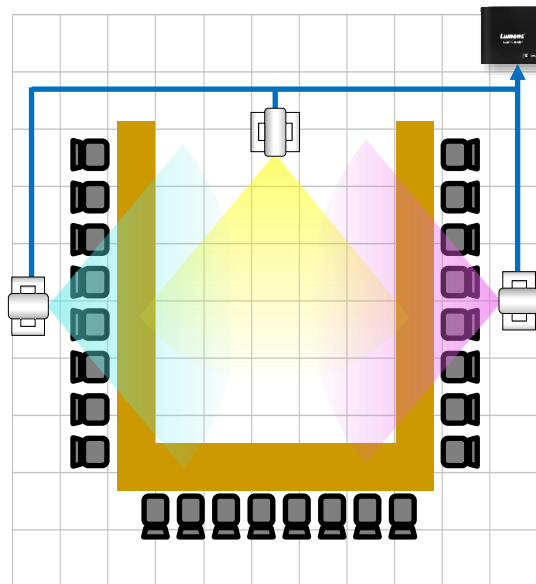
VC-TR60A + OIP-N60D = VoiceConnect

Without



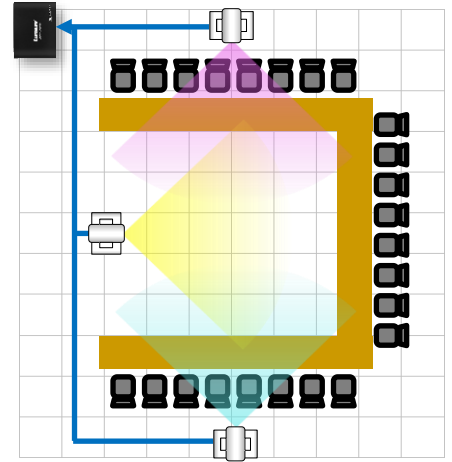
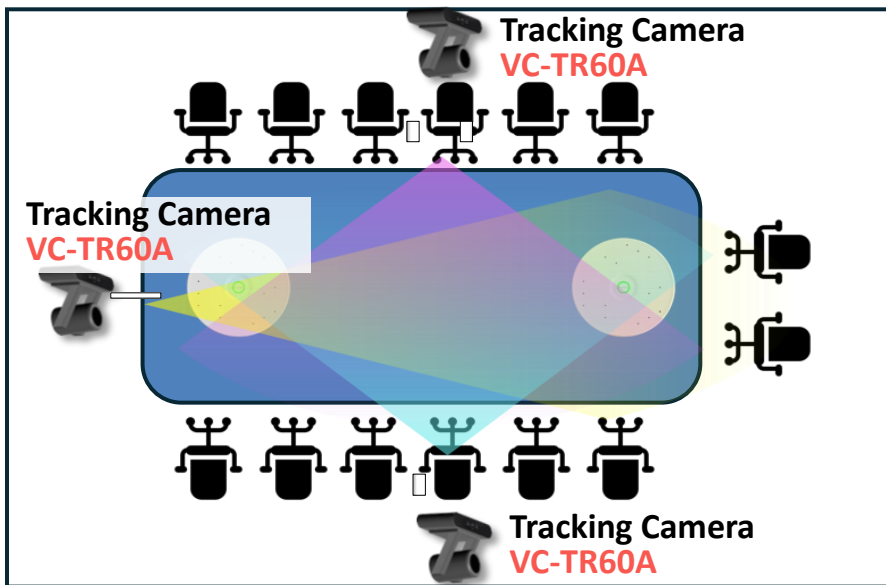
Single Voice Tracking Camera Covers

VoiceConnect

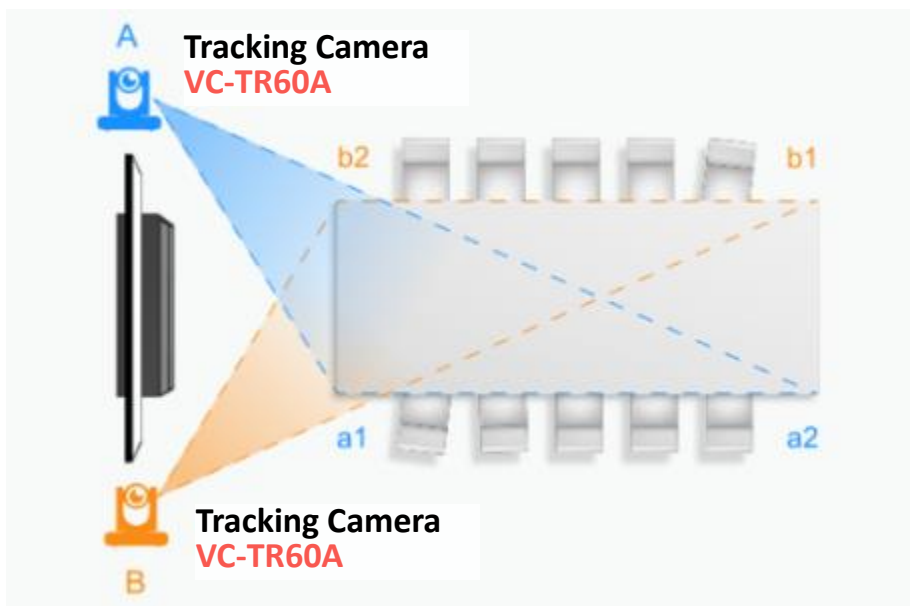


Multiple voice tracking cameras cover different zones to provide full tracking coverage across the entire

- **System Diagram e.g. Boardroom**
Please install the equipment according to the placement layout diagram below.



- **System Diagram e.g. Wide Classroom**



2. What You Need

■ OIP-N60D x1

- OIP-N60D : **OIB1.36** or above
- OIP-N60D Dante AV-H : **OIC1.36** or above

■ VC-TR60A x2–3 units (The following example will use 3 VC-TR60A units)

- VC-TR60A : VRK208
- VC-TR60A, V1: VRK300 or above

■ Network Connection

- All devices must be connected to the same LAN

※ VoiceConnect is a premium feature. Please contact Lumens to get the license.

3. Setup for OIP-N60D

◆ Step 1: Enable VoiceConnect

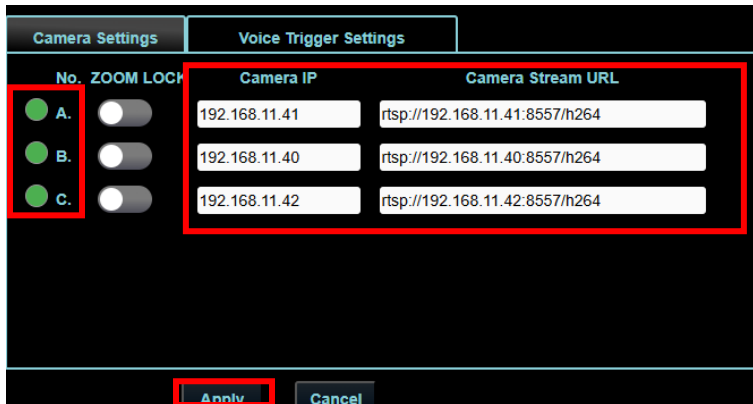
→ Go to [System] → [Settings] → [VoiceConnect] → Enable [VoiceConnect Mode]
-> Apply

No.	ZOOM LOCK	Camera IP	Camera Stream URL
A.	<input type="checkbox"/>	192.168.11.41	rtsp://192.168.11.41:8557/h264
B.	<input type="checkbox"/>	192.168.11.40	rtsp://192.168.11.40:8557/h264
C.	<input type="checkbox"/>	192.168.11.42	rtsp://192.168.11.42:8557/h264

◆ Step 2: Input camera IP & Stream URL

→ Enter VC-TR60As IP and RTSP stream, and then Apply. Follow the system architecture diagram (Using U-shaped mode as example), Camera A is the camera on the right side of Camera C, Camera B is the camera on the left side of Camera C,

and Camera C is the center camera. Make sure the light are **green**. If no, please confirm the RTSP URL and camera is work or not.

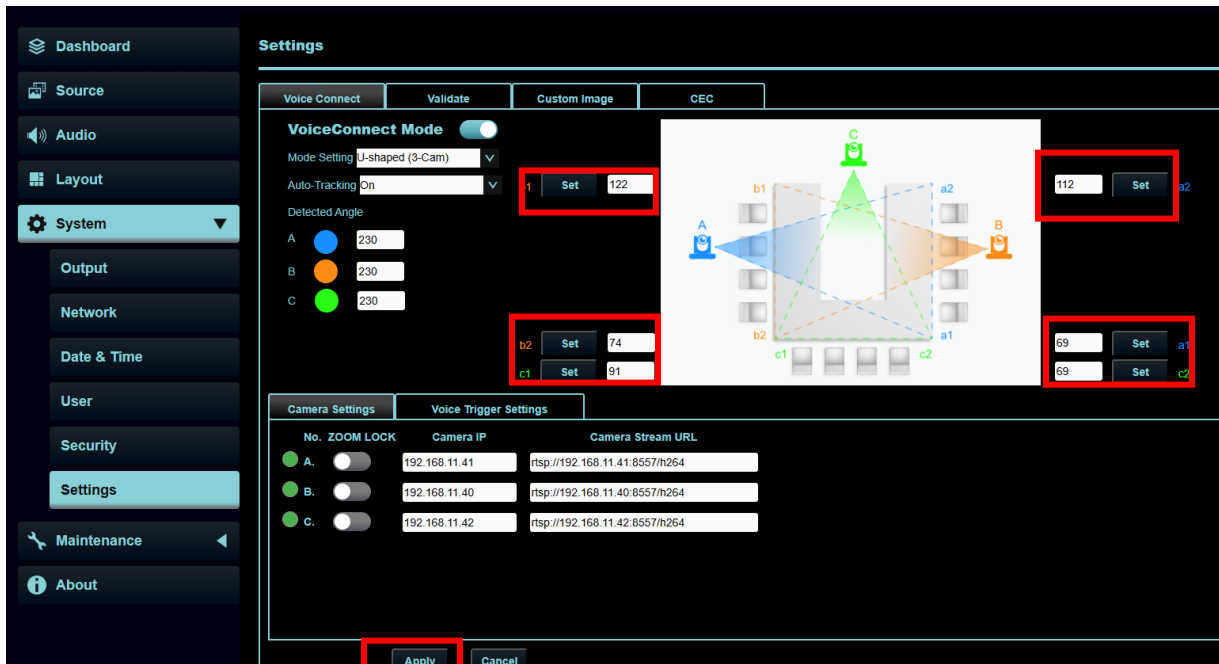


◆ **Step 3: Perform relative position calibration for each camera**

→ Follow the instruction and make continuous sound for 5–10 seconds at positions a1, a2, b1, b2, c1, and c2. (The calibration points must extend 50 cm beyond the boundaries of the actual tracking area.)

When the volume level becomes stable, press [Set].

After completing all positions, enable [Auto Tracking] on, and press [Apply].



◆ Step 4: Configure Voice Trigger Settings

→ Go to [Voice Trigger Settings] -> Set below setting -> [Apply]

- **Trigger Delay Time:** Timing to calculate to change the camera.
- **No Voice Trigger Action:** If you want to set up No Voice Trigger Action, please set [No Voice Trigger Action] to [Specify]. You can setup the timing and the video URL when there is no one speaking (e.g.: Panoramic video of VC-TR60A or other camera RTSP stream.)
- **Screen Stream URL:** You can specify a video URL when there is no one speaking.

Step 5: Audio Reference Settings

→ Go to [Voice Trigger Settings] -> Set below setting -> [Apply]

- **Audio Reference:** If you need to avoid speaker interrupt, select UAC, Audio in, or Dante as Audio Reference source.
- **Detection Sensitivity:** Sensitivity levels: High, Medium, and Low (from most to least sensitive).
- **Screen Stream URL:** You can specify a video URL when remote speaker is speaking.

Step 6: Conversation Mode Settings

→ Go to [Voice Trigger Settings] -> Set below setting -> [Apply]

- **Conversation Detection:** Enable/Disable conversation mode
- **Screen Switch URL:** You can specify a video URL when the conversation mode is enabled. (e.g.: panoramic video of VC-TR60A or other camera RTSP stream.)
- **Multi-Voice Frequency & Multi-Voice time:** OIP will enable Conversation mode when it switches the camera X times during Y second (e.g.: OIP switches to different VC-TR60A 3 times during past 30 second, it will enable conversation mode.)

The screenshot shows the 'Voice Trigger Settings' interface. The settings are as follows:

Setting	Value
Trigger Delay Time(s)	1
No Voice Trigger Action	Specify
No Voice Duration(s)	10
Screen Switch URL	rtsp://192.168.11.42:8553/h264
Audio Reference	UAC
Detection Sensitivity	Low
Screen Switch URL	rtsp://192.168.11.40:8553/h264
Conversation Detection	Enabled
Screen Switch URL	rtsp://192.168.11.41:8553/h264
Multi-Voice Frequency	3
Multi-Voice Time(s)	30
Multi-Voice Release Time(s)	10

Buttons: Apply, Cancel

- **Multi-Voice Release Time:** OIP will disable Conversation mode when someone is speaking at least Z second or no one speak at least Z second. (Minimum is 10secs.)

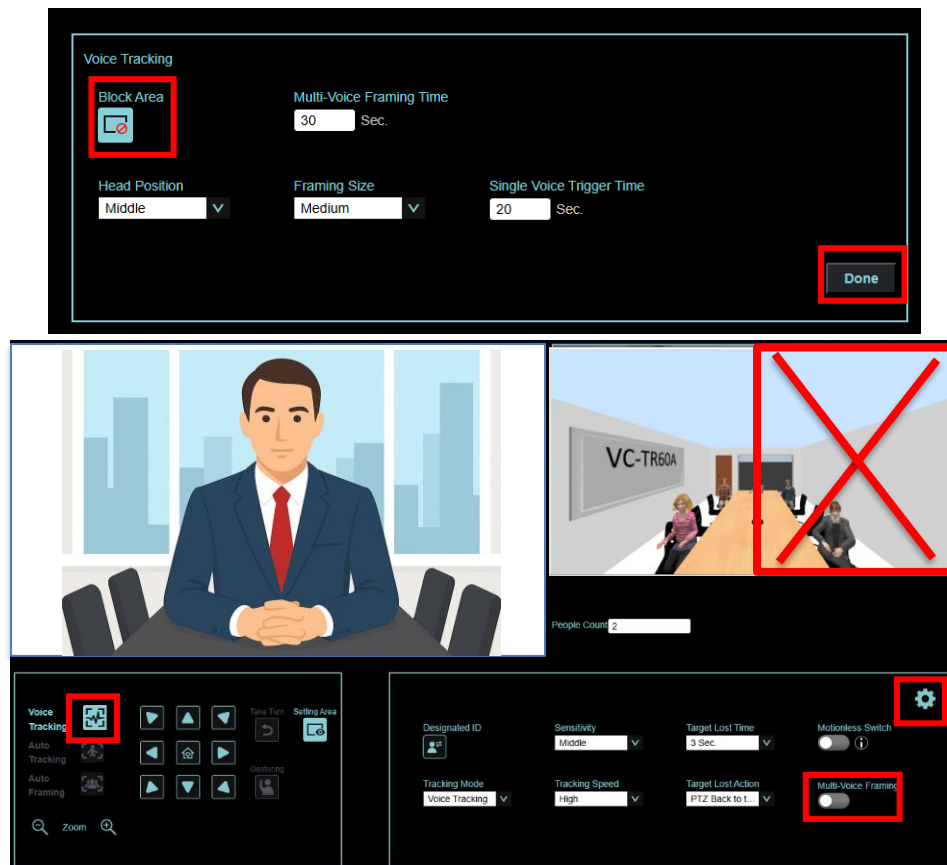
4. Setup for VC-TR60A

Step 1: Access the camera web page → [Tracking] → Disable Multi-Voice Framing.

Step 2: Go to Advanced Settings, define Block Areas where tracking is not needed.

Step 3: Enable Voice Tracking.

* Repeat the above steps for each camera.



5. Setup for Audio Reference

- **Dante**

Step 1: Go to N60D webpage -> [System] -> [Output], Enable Virtual USB Output, and UAC out select Follow Dante.

Step 2: Go to Dante Controller -> Subscribe N60D Transmitter channel to Dante Speaker. (e.g. N60D send UAC audio output to Shure MXA902 Dante Speaker.)

- Audio in

Step 1: Connect your 3.5mm Audio Cable from the DSP to N60D audio in port.

6. Limitations

- Supports RTSP stream only.
- Dante AV-H stream not supported (expected in future firmware update)
- HDMI output: up to 4K60; UVC output: up to 1080P30.

7. Support

For installation or configuration support, please contact Lumens technical support team to assist.